

GHOST™ Solution Suite 3.3

Accelerate and Simplify Imaging and Deployment

At A Glance

GSS alleviates many day-to-day operational challenges by consolidating the functions found within the endpoint management life-cycle in a single, easy to use solution.

Deployment

Provides a single solution for deploying desktops, laptops, tablets, servers, and thin clients across heterogeneous operating systems, including Windows, Mac, and Linux.

System Builds

Simplifies image management and reduces the number of images needed for deployment by using DeployAnywhere technology to deploy hardware-independent images.

Management

- Provides comprehensive inventory and powerful software delivery functions. Improved PXE infrastructure and initial deployment allow you to automate in new and exciting ways.
- Offers fast and easy actions to deploy, configure, and upgrade software on managed devices including being able to group machines based on application versions for easy targeting purposes.

Standardization

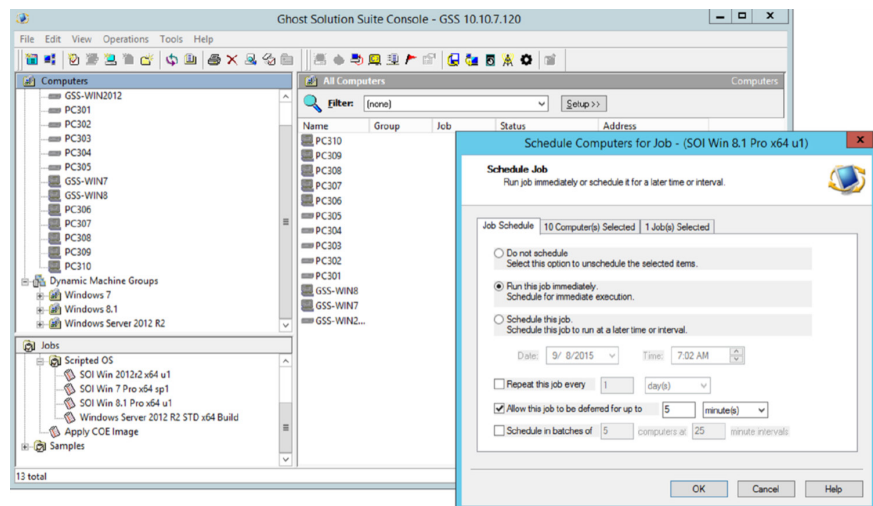
Enables jobs and tasks to be created in a consistent, simplified manner and scheduled to run right away or at a future time—with additional repetition, deferral, and batch processing options.

Overview

Symantec™ GHOST Solution Suite (GSS) is an industry leading and award-winning solution for deploying and managing desktops, laptops, tablets, and servers. From a single management console, you can quickly and easily migrate to the latest operating systems, inventory machines, deploy software, and perform custom configurations across multiple hardware platforms and OS types including Windows, Mac, and Linux.

Easy to use Management Console

With GSS 3.3 you can do everything you need to manage your systems to manage your systems from within a single console without leaving your desk. Use the intuitive and fast interface to build jobs to perform all of your computer management tasks. A single job can include every step needed to provision and manage a machine, including disk configuration, OS deployment, network configuration, and software deployment.



- Simply drag a Windows, Mac, or Linux job onto a computer or group of computers, and then run it immediately or schedule it for after hours. It is that easy.
- The console includes multi-casting capabilities, support for adding, modifying, and deleting computers, jobs and tasks, and support for managing virtual computers and thin clients.
- It is also easy to restrict access to console functions and managed systems with role-and-scope-based security, so only authorized staff can access and manage appropriate systems.
- Our centralized management console increases IT productivity and helps lower the total cost of ownership (TCO) for desktops, laptops, tablets, and servers.

Simplified Inventory, Software, and Settings

OS deployment and configuration is only part of the battle. Once a computer is in day-to-day usage, ongoing tasks like inventory, software management, and basic asset management are also important areas that must be addressed.

GSS 3.3 makes it fast and easy to deploy, configure, and upgrade software on managed devices including being able to group machines based on application versions for easy targeting.

GSS also enables power users to perform advanced automation and customized scripting. Whether it is support for server-side scripting or conditional error handling, Ghost Solution Suite provides unparalleled job and task management.

Technician's Web Console

GSS 3.3 includes a web-based console designed specifically for technicians with minimal experience. It complements the full console and is simple to use with built-in wizards for common tasks such as Windows 10 migration and image deployment. The console also has a modern UI and works with any browser.

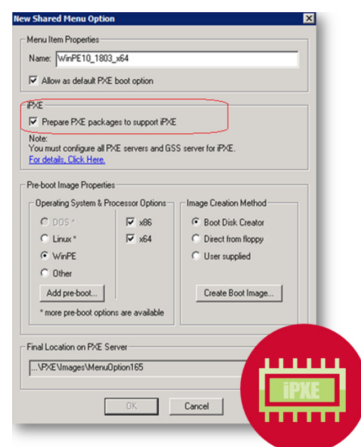
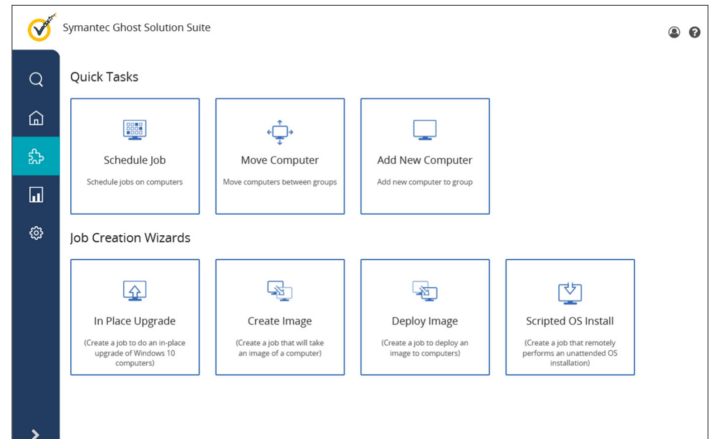
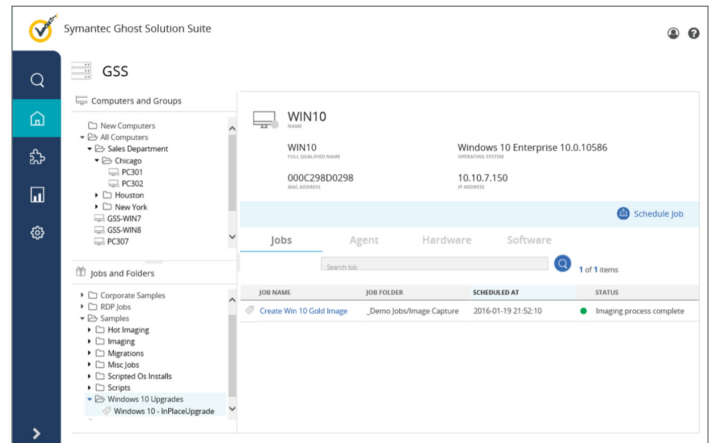
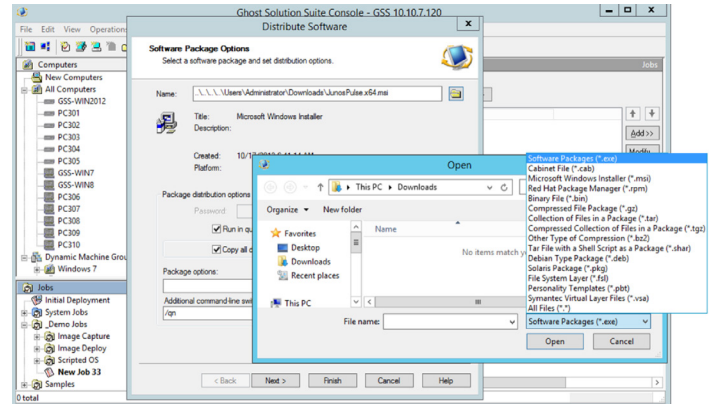
With the web console, frequently run jobs can be delegated to frontline technicians to optimize resources and reduce costs. The web console is also highly scalable, so a large number of technicians can use it simultaneously.

Quick Tasks

Quick tasks allow you to schedule existing jobs, move computers to groups or to add new computers for immediate provisioning of images. Quick tasks can simplify complex processes into step-by-step flows that will make even the newest admin feel like a pro.

Job Creation Wizards

Job Creation Wizards provide step-by-step guides to create the most common jobs executed in the console. These wizards allow users to quickly learn how to create jobs and ensure consistency throughout the process. Jobs can be deployed using the web console and can also be edited further in the standard GSS console.



Faster Imaging

A significant part of the time required for imaging machines is booting into automation. The longer a machine takes to get into automation, the longer the overall imaging process takes.

GSS 3.3 supports iPXE which delivers a dramatic speed improvement to the pre-boot automation process. iPXE shortens the overall downtime during deployment activities and gets the end user back to productivity quicker.

Enhancements in Linux Management

Our latest Linux enhancements are driven by constant changes in Linux file systems. Significant engineering effort has been spent in the following GSS 3.3 enhancements:

- Capture Linux operating system images in a fraction of the time previously required by turning off checksums and using RAW imaging to create a sector-by-sector image of the data on a disk and not the drive itself.
- Capture and deploy images for Linux platforms that use a Logical Volume Manager (LVM), extended partitions, and that have disk drives with the Swap, XFS, or Ext 2/3/4 file systems.
- Use the Ghost executable to capture and deploy Linux images from non-bootable disks with GPT partitions larger than 2 TB in size.
- Use the new LinuxPE (.frm2) file with GPT and 64-bit support to convert MBR images to the GPT format (conversion is triggered automatically if the destination disk is greater than 2 TB).

Key Features

- Best-of-breed disk image capture and deployment
- Scripted operating system installation
- Industry leading imaging engine
- PC user and application settings migration
- Intelligent driver to device mapping
- Remote task execution and sequencing

For the latest Platform Support Matrix and documentation, see techdocs.broadcom.com. Learn more about Ghost Solution Suite at ghost.com.

- Bare-metal deployment
- Windows, Mac, and Linux support
- Tablet support (selected models)
- Powerful automation environment options

GSS Installation Support

- Windows Server 2012/R2
- Windows Server 2016
- Windows Server 2019
- Windows Server (1903, 1909, 2004, 20H2)
- WinPE 10 (Pre-boot) 1703-2004/20H2

GSS SQL Server Support

- MS SQL 2012 / SP4
- MS SQL 2014 (x64)
- MS SQL Express 2014
- MS SQL 2016 SP1/2 EE
- MS SQL 2017
- MS SQL 2019

GSS Client Agent Support

- Windows 7/Embedded
- Windows 8/8.1
- Windows 10
- Windows 10 LTSB 2016, LTSC 2019
- Windows 10 1703-1903, 1909/2004/20H2
- Windows 2008/R2/SP2
- Windows Server 2012/R2
- Windows Server 2016/Core
- Windows Server 2019 - 1909/2004/20H2
- Red Hat 5.0-5.11, 6.0-6.10, 7.0-7.8, 8.0-8.2
- CentOS 5.0-5.11, 6.0-6.10, 7.0-7.8, 8.0-8.2
- SUSE 10-15 SP1/SP2
- Debian 7.0/8.0/9.2/10
- Ubuntu 10.04-20.04
- Mac OS 10.10-10.14 (Agent Only)